

# PLAYBILL®

*Clayton Performing Arts Center  
Pellissippi State Community College  
Knoxville, TN*

PELLISSIPPI STATE COMMUNITY COLLEGE



by William Shakespeare

**April 5, 6, 12, 13 ♦ 7:30 p.m.**  
**April 7 & 14 ♦ 2:30 p.m.**

---

# DIRECTOR'S NOTE

---

Lear. LEAR. Phew. A bit of a mountain to climb for theatre makers and audiences alike. But when Terry Weber says, "I want to play Lear. This might be my only chance. Will you direct?" Well, you say "yes". Pellissippi and The WordPlayers have been collaborating on projects for closing in on twenty years. Terry and I have worked on shows together at the Clarence Brown but never with our respective companies or at this level. "Hey, let's climb *this* one!"

LEAR, is a different beast. Multiple, huge themes abound in the play: The indignities of aging, the collisions of parents and their children, the consequences of neglecting important things, the dangers of ego and narcissism. The things true in Shakespeare's time are still true today. They remain a continuing danger for us all.

Saying so is a bit cliché but it really has been an honor to work with this cast, designers, and crew. This extraordinary group consists of professionals, semi-professionals, Pellissippi students, Pellissippi alumni, and community folks. Every single person has thrown themselves into their work on this show, sometimes literally. I am grateful for them all.

Thanks for coming out and letting us act as Sherpas for you. K2 awaits.

## Co-Producer's Note

At our first meeting about this collaboration, Charles Miller asked, "Why would a faith-based company want to produce LEAR?" Many things come to mind.

Communities of faith are not immune from the struggles which emanate from the themes Charles has listed above. Sometimes, perhaps, the struggles are magnified because of one's faith or lack thereof.

There are a plethora of references and appeals to supernatural powers in the play. To what extent do these powers shape the human condition? For people of faith, this is an ever-present question.

LEAR is unquestionably a dark tragedy. But viewing it through a faith-based perspective might reveal vestiges of redemption. Is Edgar a Christ-like figure because of his willingness to give up his name and his status in order to restore as much justice and order as possible? Does Cordelia's honest, unconditional, and ultimately sacrificial love overcome the darkness? Is Lear's reconciliation with Cordelia redemptive for him?

Ironies abound. The sighted seem blind to the truth. Only when blinded does Gloucester ultimately find his way to reconciliation and recognition of truth.

As with all great tragedies, KING LEAR offers lessons to be learned in navigating the human condition. In contrast to many characters in the play, may the lessons we need to learn not come too late.

-Terry Weber

**Pellissippi State Community College  
Clayton Performing Arts Center**

PRESENTS

# **KING LEAR**

by  
**William Shakespeare**

with

Raine Palmer  
Caroline King  
Celeste Pelletier

Terry Weber  
Jacques DuRand

Josh Bigwood  
Leo LaCamera  
Billy Kyle Roach

WordPlayers Managing Director  
Terry Weber

Technical Director  
Claude Hardy

WordPlayers Artistic Director  
Ethan Norman

Light Designer  
Liv Jin

Costume Designer  
Ariana Dotson

Sound Designer  
Allison Bucher

Stage Manager  
Lucy Wright

Fight Director  
Robert Borwick

Text Coach  
Jeffrey Parker

Intimacy Coordinator  
Casey Sams

Projection/Video Design  
Solomon Miller

Directed by  
Charles R. Miller

In Partnership With  
The WordPlayers Theatre Company

KING LEAR is being supported by a generous Arts Project Support grant from the Tennessee Arts Commission and the Arts & Culture Alliance

The WordPlayers' current season is being supported, in part, by federal award number 21.027 awarded to Knox County by the U.S. Dept. of the Treasury and the Arts & Culture Alliance

---

# CAST

---

## Cast Members

King Lear	Terry Weber
Goneril	Raine Palmer
Regan	Caroline King
Cordelia	Celeste Pelletier
Duke of Albany	Rollin Prince
Duke of Cornwall	Joe Jaynes
Earl of Gloucester	Jacques DuRand
Earl of Kent	Billy Kyle Roach
Edgar	Leo LaCamera
Edmund	Josh Bigwood
Fool	Robert Borwick
Oswald	Caden Elliot
King of France	Shon Seivers
Duke of Burgundy	Aiden Enters
Old man & Doctor	Kevin Collins
Ensemble	Logan Maples
Ensemble	Jessica Ryion
Ensemble	Madeline Trout
Ensemble	Dekan Mueller
Ensemble	Josh Leslie

## Production / Creative

Director	Charles R. Miller
Technical Director	Claude Hardy
Stage Manager	Lucy Wright
Assistant Stage Manager	Delanie Oestreich
Assistant Stage Manager/ Assistant Technical Designer	Josh Leslie
Fight Director	Robert Borwick
Costume Designer	Ariana Dotson
Lighting Designer	Liv Jin

---

# CAST

---

## Production / Creative (continued)

Sound Designer ..... Allison Bucher  
Properties Designer ..... Caryss Johnson  
Intimacy Coordinator ..... Casey Sams  
Text Coach ..... Jeffrey Parker  
Projection/ Video Design ..... Solomon Miller



## Terry Weber

*as King Lear*

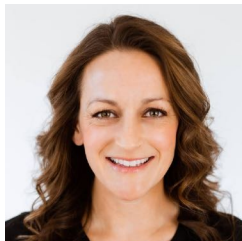
Terry is the Managing Director of The WordPlayers and Professor Emeritus of Theatre at UT (retired after 31 years). Terry's acting career has taken him to theaters in New York, Seattle, Milwaukee, Louisville, Chicago, Kansas City, Montgomery, Knoxville, Toronto, Orlando, Charleston, Asheville, Cincinnati, and Avignon (France). Favorite roles at the Clarence Brown Theatre: Scrooge in *A Christmas Carol*, Larry Morrow in *Dream of the Burning Boy*, Sir Jealous in *The Busy Body*, Aviator in *The Little Prince*, Emperor Joseph in *Amadeus*, Col. Chesney in *Charley's Aunt*, Karenin in *Anna Karenina*; at The WordPlayers: C.S.Lewis in *Shadowlands*, Sam in *Traveler in the Dark*, Booth in *Killing Lincoln*; Benedick and Iago at the Kentucky Shakespeare Festival; and Librarian in *Underneath the Lintel* at NC Stage Company. Many thanks to Charles and the Pellissippi Dept. of Theatre for making possible this magnificent collaboration. John 8:32.



## Raine Palmer

*as Goneril*

Raine is an East Tennessee native and actor of voice, theatre, and film. Some of her regional theatre acting credits include Honey in *Who's Afraid of Virginia Woolf?*, Edith Frank in *The Diary of Anne Frank*, Richard II in *Richard II*, Gretchen in *Boeing Boeing*, and Marcia in *Cato*. Raine would like to thank her family, friends, and loving husband Caleb for their everlasting support.



## Caroline King

*as Regan*

Caroline is thrilled to be working on such a phenomenal play with such an incredibly talented cast and crew. She was most recently seen in a "bucket list" role of Katharina in *The Taming of the Shrew* with the Tennessee Stage Company (Summer 2023). Some of her favorite Shakespeare roles to date have been, Mercutio in *Romeo and Juliet*, Lavinia in *Titus Andronicus*, Lady Olivia in *Twelfth Night*, and tackling the role of Jess in *The Complete Works of William Shakespeare Abridged*. Her favorite roles of all time are being a mom to Auguste (16) and Iris (12) and a wife to her forever boyfriend Patrick. She is over the moon grateful for her incredible family and community of friends for being her tribe of support and the best cheering section a girl could ever ask for!

---

# WHO'S WHO

---



## Celeste Pelletier

*as Cordelia*

Celeste is beyond thrilled about the opportunity to work with the wonderful cast and crew of Pellissippi's and The WordPlayers' joint production of *King Lear*. You may have seen her in the past in productions at River and Rail Theater as #46 in *The Wolves*, or as The Fox in *The Little Prince*. Celeste would like to thank everyone in the crew, her wonderfully supportive friends and family, and most of all, her cat Dumpy, without whom she would surely go insane. She hopes you enjoy the show!



## Rollin Prince

*as Duke of Albany*

Rollin is excited to be a part of another WordPlayers show! He was last seen in *Clue: On Stage* at Oak Ridge Playhouse as well as the previous three productions of *The Lion*, *The Witch*, and *the Wardrobe*. Rollin works for Knox County Schools at Bearden High School and coaches the improv teams at Bearden and Oak Ridge High School. He can also be seen in the Knoxville comedy group, Pretend Friends Improv troupe! Rollin would like to thank Charles, Lucy, and the cast & crew of this wonderful production. And also his daughters for not plotting against him too much!



## Joe Jaynes

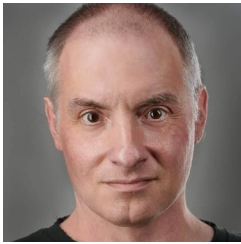
*as Duke of Cornwall*

Joe has appeared in 60+ stage, TV, and film productions. He is thrilled to be back at Pellissippi State with The Wordplayers for *King Lear*. Despite having used sonnets and soliloquies in auditions for years, this is Joe's first full Shakespeare production. One more item checked off the bucket list! Thanks Charles, Terry, Lucy, and fellow cast & crew for making this production so satisfying. And thank you, Kim, for your love, understanding, and support during the long days and nights that theater demands.

---

# WHO'S WHO

---



## Jacques DuRand

*as Earl of Gloucester*

Jacques is very pleased to be back on stage with The WordPlayers, having previously worked with them as Stanton Presley in *The First Church of Texaco*, and Simon Stimson in *Our Town*. He has previously worked with the Tennessee Stage Company, the Clarence Brown Theatre, Encore Theatrical Company, and Flying Anvil, amongst others. He has been active in Knoxville theatre for about twenty years. He is a proud graduate of the Royal Welsh College of Music and Drama. He would like to thank his long-suffering wife Sandy, and his two children, Lenora and Random, for all their love and support.



## Billy Kyle Roach

*as Earl of Kent*

Billy Kyle is thrilled to be back on stage after a brief hiatus. Billy Kyle has been in a number of shows around Knoxville, but this is the first time he has performed on the Pellissippi stage. A huge thank you to Charles, and the entire cast and crew. None of this would be possible without them. Enjoy the show!



## Leo LaCamera

*as Edgar*

Leo is honored to once again return to the Pellissippi stage, and to work with The WordPlayers after so many years. He currently lives in Chicago and primarily performs comedy and improv, and it's a rare privilege for him to be able to work on a full length play with such a dedicated cast and crew. He would like to thank everyone involved in the production and enjoyment of this show!



## Josh Bigwood

*as Edmund*

Josh is excited to be working with The WordPlayers for the first time, and grateful to be back on the Pellissippi stage. He was last seen as Richard in *The Lion in Winter*. He would like to thank the cast, crew, and director. He would also like to give a special thank you to his fiancé, Kristy Garcia Breneman, for all of her amazing support.



---

# WHO'S WHO

---



## Robert Borwick

*as Fool*

Robert is pleased to be making his performance debut at Pellissippi. He has regularly performed as Drosselmeyer in *The Nutcracker* and the Dance Master in *Cinderella* at Armfield Dance Academy, where his wife and children are dancers. He and his wife help run a unique summer theatre camp through the Athens Area Council for the Arts. He sends his love to his family and thanks them for letting him use the car so much this spring.



## Caden Elliot

*as Oswald*

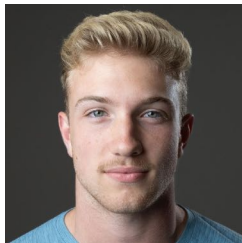
Caden has been a part of the Pellissippi theatre program for longer than he cares to admit. He has been in *The Tempest*, *Radio Noir*, made and acted as a life-sized wolf puppet in *Peter and the Wolf*, and is now proud to be Oswald in Pellissippi and The WordPlayers' production of *King Lear*!



## Shon Seivers

*as King of France*

Shon is a Freshman at Pellissippi and comes excited to participate in *King Lear*. He is a performance major looking to achieve his Bachelor's of Fine Arts at a four-year university after his time at Pellissippi. He has performed in the fall production of *Peter and the Wolf* (Peter) directed by Grechen Wingerter, and productions in high school (Halls High School) including *Breaking the News* (Todd), *Clue* (Wadsworth), *Game of Tiaras* (The King), and *The Bold the Young and the Murdered* (Morris Nyborg). Shon hopes to further his craft as an actor here at Pellissippi and perform in more productions in the future.



## Aiden Enters

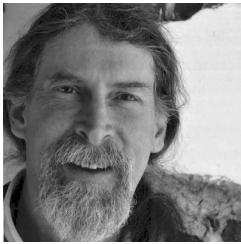
*as Duke of Burgundy*

Aiden is a freshman at Pellissippi State Community College majoring in Theatre Arts, focusing in acting. He is thrilled to be a part of his first show on the Pellissippi stage! He would like to thank his family and friends, and his stage manager for helping write his bio!

---

# WHO'S WHO

---



## Kevin Collins

*as Old man & Doctor*

Kevin is a performer, writer, and researcher deeply rooted in East Tennessee. He's performed locally with Tennessee Stage Company (most recently as John of Gaunt/Gardener/Bishop in *Richard II*), Foothills Players, Moving Theater, Tiger Lily Theater, Kings Players, The WordPlayers, and 70/30 Creatives. He is a multi-instrumentalist with the Emancipators folk band and does activist mega puppetry with the Catalystica Players as creative director.



## Logan Maples

*as Ensemble*

Logan is a student at PSTCC. This is Logan's second performance with Pellissippi, seventh time being in a play. He would like to thank PSTCC as well as The WordPlayers for this opportunity.



## Madeline Trout

*as Ensemble*

Maddie is thrilled to be a part of The WordPlayers and Pellissippi's production of *King Lear*. Most recently she was #8 in River and Rail and Pellissippi's production of *The Wolves*. Other credits include *Our Tempest*, *Three by Nigro*, and *Musical Comedy Murders of 1940*, all produced by Pellissippi State Community College. Madeleine has been studying performance and technical theatre at Pellissippi for the past 3 years and is hoping to work more in sets and lighting in the future. She has had an absolute blast working with this cast and director and would like to thank her wonderful family and best friend Kate for always believing in her.

---

# WHO'S WHO

---



## Dekan Mueller

*as Ensemble*

Dekan is excited to be in his first large Shakespeare production with so many talented people to learn from. Prior to this production, he was Jafar in *Aladdin* and Jo in *Thistle Blossoms*. Other theatre credits include: four personal reflective performance monologues, audio tech for talent shows and other personal performances, a participant in maze competition, and finally Roane State performances. Most recently he took part in Pellissippi State's production of *Peter and the Wolf*, adapted into a shadow puppet performance, directed by Grechen Wingerter.



## Jessica Ryion

*as Ensemble*

Jessica is happy to be a part of *King Lear*. She is a performance Major at Pellissippi and has already done one production with them. She was a hunter in *Peter and The Wolf*. She has also performed at the Knoxville Civic Coliseum for dance. She is grateful to all her friends and family who have supported her.

---

## CREW WHO'S WHO

---



### **Charles R. Miller (Director/Scenic Designer)**

Charles is a Professor and the Director of Theatre at Pellissippi. He was the co-founder and Producing Artistic Director of the Smoky Mountain Shakespeare Festival for eight years. He has worked as an actor or director at the Clarence Brown Theatre, American Stage, Asolo Theater, Porthouse Theatre, and the Idaho Shakespeare Festival. He has worked as voice coach and fight choreographer for the University of Tennessee and the Clarence Brown Theatre. He is a certified associate teacher of Fitzmaurice Voicework<sup>Â</sup>™. He has been recognized as an Actor/Combatant by the Society of American Fight Directors and has done the fight choreography for over two dozen shows. He holds an MFA from Southern Methodist University and a BFA from the University of Idaho.



### **Claude Hardy (Technical Director/Scenic Designer)**

Claude received his M.F.A. from Wayne State University in Detroit, MI. Hardy teaches theatre design at Pellissippi State. He has worked with several theatre companies in the Knoxville area such as: Knoxville Opera, UT Opera, the Carpetbag Theatre, Theatre Knoxville Downtown, and River and Rail Theatre. Design credits include *Machinal*, *A Midsummer Night's Dream*, *Great American Trailer Park Musical*, *Voice of the Prairie*, *Brighton Beach memoirs*, *A Doll's House*, *Arabian Nights*, *The Barber of Seville*, *Antigone*, *Unnecessary Farce*, *Tempest*, and *She Kills Monsters*, *Bloody, Bloody Andrew Jackson*, *Stupid F\*\*\*ing Bird*, *The Seagull*, *Soft Animals*, *These Shining Lives*, *SWOPERA*, *Red Summer*, and *The Wolves*.

---

# CREW WHO'S WHO

---



## Lucy Wright (Stage Manager)

Lucy is thrilled to be working on her fifth production with The WordPlayers and her first production with Pellissippi State Community College. She recently graduated from Flagler College with a BA in Theatre Arts, focusing in stage management. Her recent favored stage management credits include *Footloose*, *Cinderella*, *Fefu and Her Friends*, *The Rocky Horror Picture Show*, *The Old Man and The Old Moon*, and *Bright Star*. She recently was the Class of 2023 recipient of the Department of Performing Arts award at Flagler College and was nominated by KCACTF for her work in stage management. She would like to thank her mom, Amy, her mentors, Leann and David, and all of her friends and family for their constant support of her busy life in the theatre.



## Josh Leslie (Ensemble, Assistant Technical Director, ASM)

Josh is a Technical Theatre Major at Pellissippi State Community College. He is excited for this show because of all the tasks that he must manage. Some recent shows that he has worked on include *Footloose*, produced by the Wordplayers, *Peter and the Wolf*, produced by Pellissippi State Community College, *A Case for The Existence of God*, *It's a Wonderful Life*, and *Fat Ham* produced by River and Rail Theatre company.



## Robert Borwick (Fight Director)

Robert is a Certified Teacher of Stage Combat with the Society of American Fight Directors and has been teaching stage combat at Pellissippi since 2011. He has served as fight director throughout much of the West Coast and at Pellissippi for past productions including *The Tempest* and *She Kills Monsters*. He and his wife help run a unique summer theatre camp through the Athens Area Council for the Arts. He sends his love to his family and thanks them for letting him use the car so much this spring.

---

# CREW WHO'S WHO

---



## **Ariana Dotson (Costume Designer)**

Ariana (Ari) is pleased to be working with Pellissippi again. While this is her first show doing Costume Design for Pellissippi, she is a past design student of Claude Hardy's and was so excited to be back. Since graduation from PSCC she has worked on many shows at the Clarence Brown such as *HAIR* the musical and *A Christmas Carol*. She has been focused solely on Costume Design since graduating from UTK. She is thankful for all the opportunities she has had post graduation through Tennessee Stage and The WordPlayers and sends her love to everyone in her life for their continued support!



## **Delanie Oestreich (Assistant Stage Manager)**

Delanie is a Technical Theatre Major at Pellissippi State Community College, with a focus on stage management. She has worked on high school productions of *Puffs*, *Cinderella: The Musical*, *James and The Giant Peach*, and *Shrek: The Musical*. She has stage managed *Peter and The Wolf* and assistant stage managed *A Case For The Existence of God*. She is currently the assistant stage manager in Pellissippi State and The WordPlayer's production of *King Lear*.



## **Allison Bucher (Sound Designer)**

Allison is from New Orleans, Louisiana. She is a second year MFA Candidate in Sound and Digital Media Design at the University of Tennessee, Knoxville. She has previously earned a BFA in Theatre: Design and Technology from the University of Southern Mississippi. Recent Sound Design Credits include *The Giver* and *Men on Boats* at the Clarence Brown Theatre and *A Case for the Existence of God* and *Fun Home* at River and Rail Theatre Co. More of her work can be found at [www.allisonbucher.com](http://www.allisonbucher.com)

---

# CREW WHO'S WHO

---



## **Liv Jin (Lighting Designer)**

Liv is a local freelance designer with a BA in Theatre and English from the University of Tennessee Knoxville. They have designed shows with Webb School of Knoxville, Oak Ridge Playhouse, Dancers Studio, The Wordplayers, Marble City Opera, GO! Contemporary Dance, and River & Rail Theatre. Liv also serves as Lighting Mentor at the Knoxville Children's Theatre and frequently works with the Clarence Brown Theatre as an electrician. They recently designed *Peter and the Wolf* at Pellissippi last fall and are happy to return for *King Lear*.



## **Caryss Johnson (Properties Designer)**

Caryss is in her second year at Pellissippi and is happy to be in her third production here. She took part in puppet design for the production of *Peter and the Wolf*, creating all the shadow puppets and the cat marionette. Caryss plans to attend MTSU to further her knowledge in theatre design. She would like to dedicate her performance to her cat, who has always provided her unwavering support.

# ACKNOWLEDGEMENTS

## The WordPlayers says **THANK YOU** to our donors

(Gifts received since August 1, 2023)

### ALL WORLD PLAYERS (\$1000+)

Jenny Banner, Shawn & Alice Carson, Tom Cervone & Susan Creswell, Jim & Leann Dickson, Mr. & Mrs. John Ferguson, Richard & Lee Graham, Leslie A. Hull, Rob & Angie Johnson, Robert King, Jill Lagerberg, Townes Osborn & Bob Marquis, Joe & Carol Ottaviano, Warren & Kathy Payne, June Ponzio, Donald Thorne, Ron & Peggy Turner, Bill, Doty, & Chan Vinson, Anna Mae Weber, Terry & Jeni Weber

### MOST VALUABLE PLAYERS (\$500-\$999)

Ben & Missy Blalock, Tom & Linda Bolen, Bob & Annie Bright, John & Ce Ce Campbell, Brad Croisdale, George G. Conner, Jr., Barbara Darce, John & Patti Frazier, Judy Gerhardt, Loretta Harber, Carolyn Harrell, Cynthia House, Susan & David Joiner., Melanie Kirkham, Rick & Bev Kuhlman, Dan & Libby McCammon, Roberta Jean Myers, Jamie & Matthew Straining

### ALL STAR PLAYERS (\$250-\$499)

Don & Beth Arnurius, Jim & Kay Autrey, Anna Bellamy, Kurt Brandt & Dawn Huff, George & Kathy Brooks, John & Sandra Butler, John & Cindy Cannon, Mary Costa, Mary Farmer, Matthew Heaton, Richard & Beth Howe-Christensen, Mary & Steve Krempasky, Steve & Carolyn Luper, Melissa Mann, Donna Matlock, Gail Mays., Janet & Buddy McLean, Beth Peters, Emily & Jim Plemmons, Zane Scarlett, Paul & Jane Slay, Marty Smith, Troy & Ang Stavros, Dick & Irene Townsend, Bruce & Linda Wheeler

### MAJOR PLAYERS (\$100-\$249)

Adult Sunday School 6A, Central Bearden, Anonymous, Terry Deane Alford, Greg & Elaine Anderson, Margaret & Richard Ashworth, Doug & Sandi Banister, James & Debra Bean, Linda Behrend, Wendell & Rachel Boertje, Patty Bruns, Angie & Harold Cannon, Carol Ann & Dan Casey, John & Melanie Cherry, Karen & Douglas Collins, Max & Virginia Conner, Jessica & Darrin Cross, Bill & Helen Deitch, Mark & Helen Dickey, Glen Ellington, Tom Eubanks, Ed & Melissa Flanagan, Nancy & Reid Gerhardt, Linda Halley, Ken & Lynn Hawkins, Mark Hedrick, Joan Heminway, Jim & Lee Hysmith, Joe & Kim Jaynes, Cliff Jestice, Steve & Anne Jones, Terri King, Susan Kohlbusch, Jeffrey Kovac, Kay D. Lenox, Michael & Nancy Lofaro, Jim & Celia Montgomery, Mark & Doris Moreland, Cynthia Morris, Bill & Sheila Moyer, Lori Murphree, Harry Ogden, John & Sandy Peterson, Charles & Janet Purkey, John & Anita Randle, Pam Robertson, Judy Shepherd, Lisa Silverman, Wayne & Laura Smith, Lisa Stockton, David & Barbara Wasil, Joan Webb, Tom & Susan Weber, Larry G. Welch, Deborah Wooten

### UTILITY PLAYERS (\$25-\$99)

Paulette Aaron, Mariellen Amber, Anonymous, David & Rachel Ballenger, Joyce Beeler, Patricia Cappiello, Dan & Marie Carroll, Joe & Karen Carson, Jim & Kathy Cortese, Jack & Rebecca Ellison, Tamara Enix, Sarah Fischer, Jim & Carla Giles, Kathleen Greenwell, Donna Hardy, Anna Marie & Danny Hughes., Dr. Patricia Jones, Kim & Lou Kiernan, Linda King, Don Loy, James Marvel, Gaynelle Miller, Judith Montgomery, Sandra Morgan, Frank & CC Morris, Amanda Murphy, Cathy Parrish, Adele Richardson, Nancy Schowalter, Jeanne Sharp, Robbin Paige Sharp, Ron & Christine Solomon, Amanda & Larry Stair, Sadie Stroud, Lakeisha & Mikel Walker, Jack & Patricia Watson, John & Janie Wendelken



---

# ACKNOWLEDGEMENTS

---

## OTHER SUPPORT

ACA ARP Grant – Arts & Culture Alliance American Renewal Plan  
Central Baptist Bearden  
Dept. of the Treasury  
East Tennessee Foundation  
Kiwanis Club of Northside Knoxville  
Knox County  
National Endowment for the Arts  
Tennessee Arts Commission

*The WordPlayers' 2023-24 Season is being supported, in part, by federal award number 21.027 awarded to Knox County by the U.S. Department of the Treasury and the Arts & Culture Alliance.*